

THE FLATCAR LOFTS

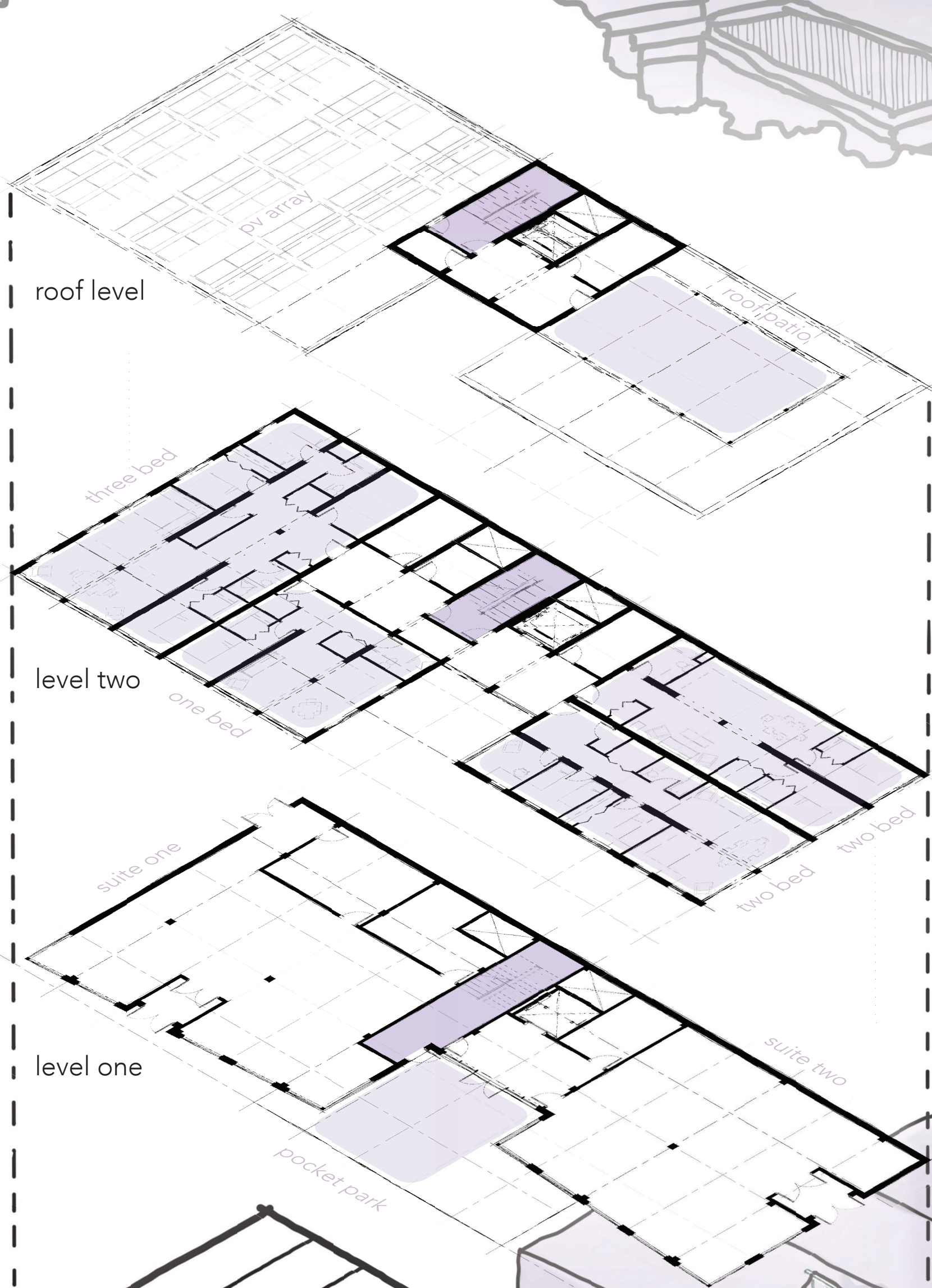
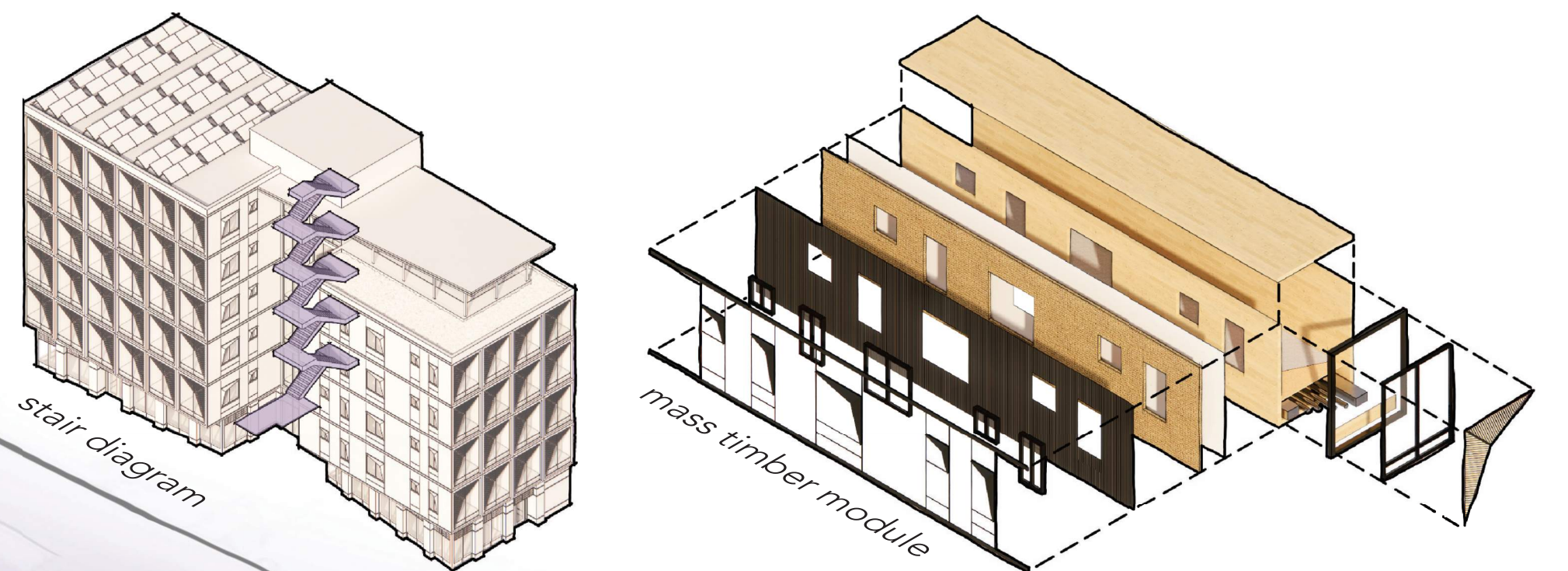
Efficient housing meets sustainable living.



SINGLE STAIR + MODULARITY

Located in the East Billings Urban Renewal District (EBURD), The Flatcar Lofts maximizes space efficiency with a single egress stair, reducing its footprint while ensuring safety and circulation. The pedestrian level commercial suites blend in contextual hues of the neighborhood while providing relief from the street. Configurable residential units above explore a variety of efficient living experiences with a forward-looking approach to revitalization within the district.

This compact layout is further enhanced by using modular construction integrating sustainable mass timber technologies to leverage construction efficiency while sequestering carbon and lowering environmental impact. Prefabricated units, transported via the adjacent rail system, reduces costs, minimizes waste, and shortens build time.



DELIVERED RENEWAL

Adhering to the AIA Framework for Design excellence, the project prioritizes human-centered design, innovation, and environmental responsibility. The design strives to improve equity, eliminate economic hurdles, prioritize energy efficiency, and enhance overall well-being. This is achieved by implementing efficient modular techniques, biophilic and environmental properties of mass timber, access to daylight, and connection to the outdoors. The Flatcar delivers a cost-effective, sustainable housing solution that supports both environmental and economic resilience.