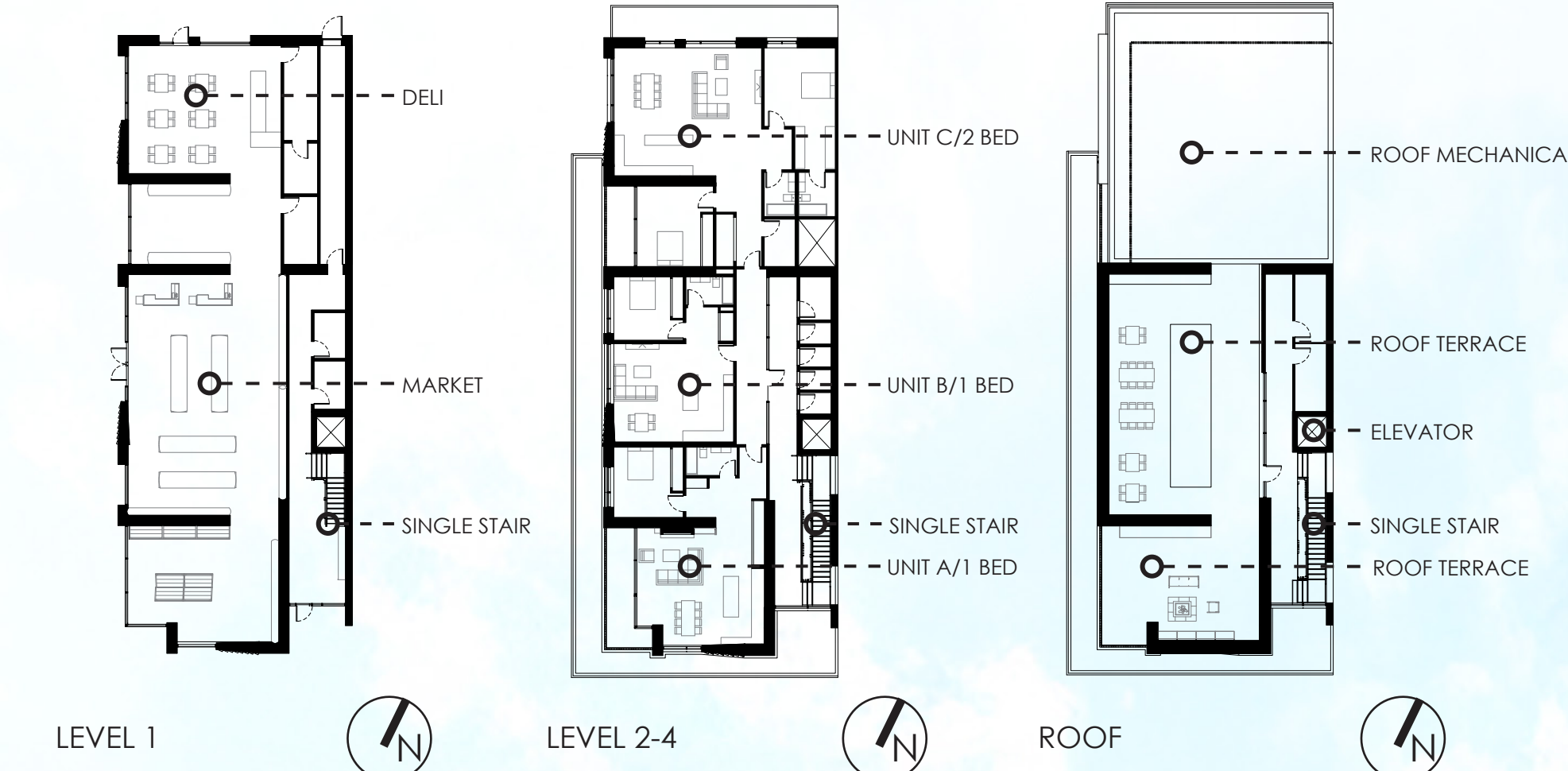


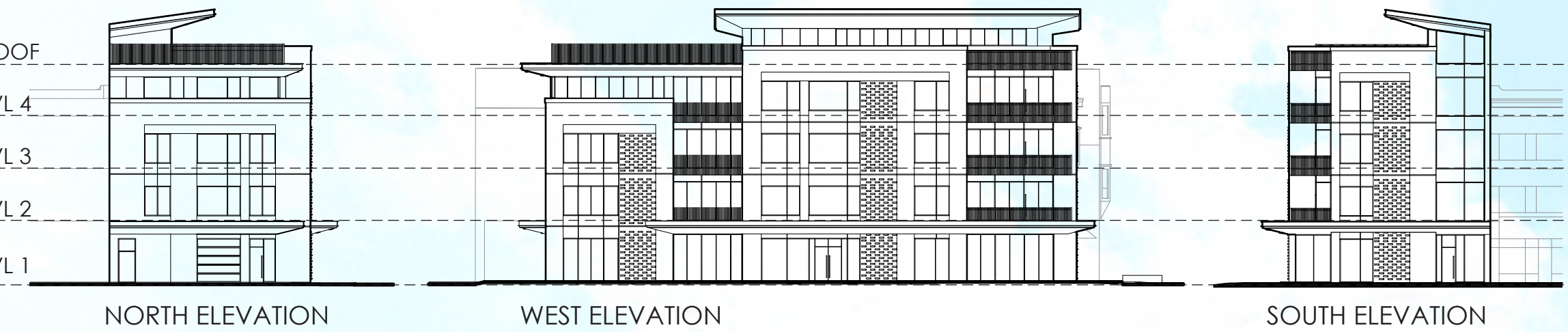
# MONTANA MARKET SUITES

Nestled within the historic fabric of Montana Avenue in Billings, Montana, this design bridges the past and future by drawing inspiration from the district's rich architectural heritage while embracing contemporary masonry design. Once the bustling heart of the city's railroad era, Montana Avenue is lined with enduring brick structures that tell the story of a frontier town transformed by commerce, industry, and innovation. This addition to the historic corridor pays homage to that legacy while offering a forward-thinking residential and commercial space. Thickened masonry walls, reminiscent of the robust construction techniques of the late 19th and early 20th centuries, serve as both a structural and environmental strategy. Acting as thermal mass, these walls collect solar heat gain in colder months and passively cool interiors in summer, ensuring year-round energy efficiency. A central glass stairwell, a contemporary reinterpretation of historic circulation cores, harnesses natural light and facilitates passive solar heating, creating both an energy-efficient and visually striking architectural element.

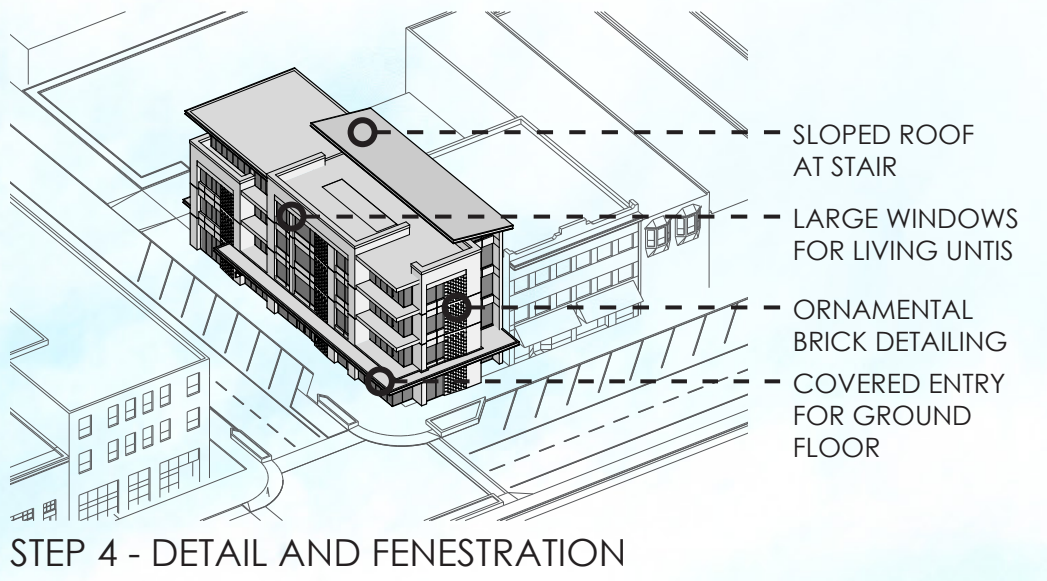
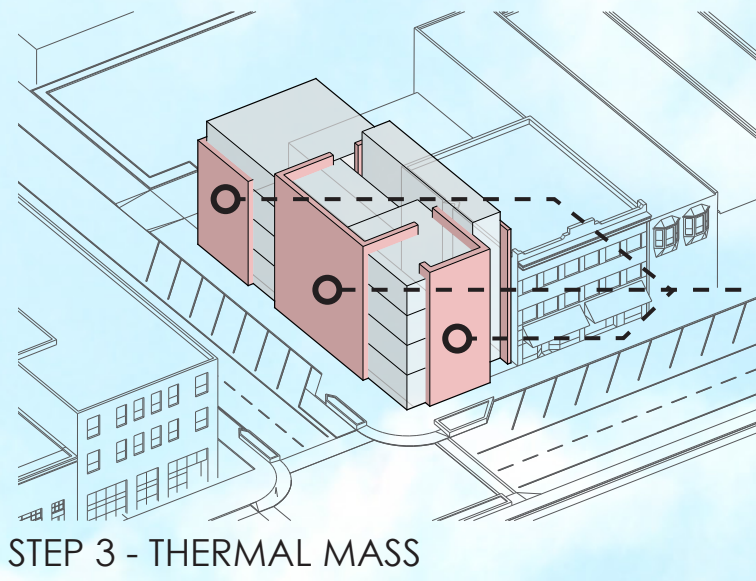
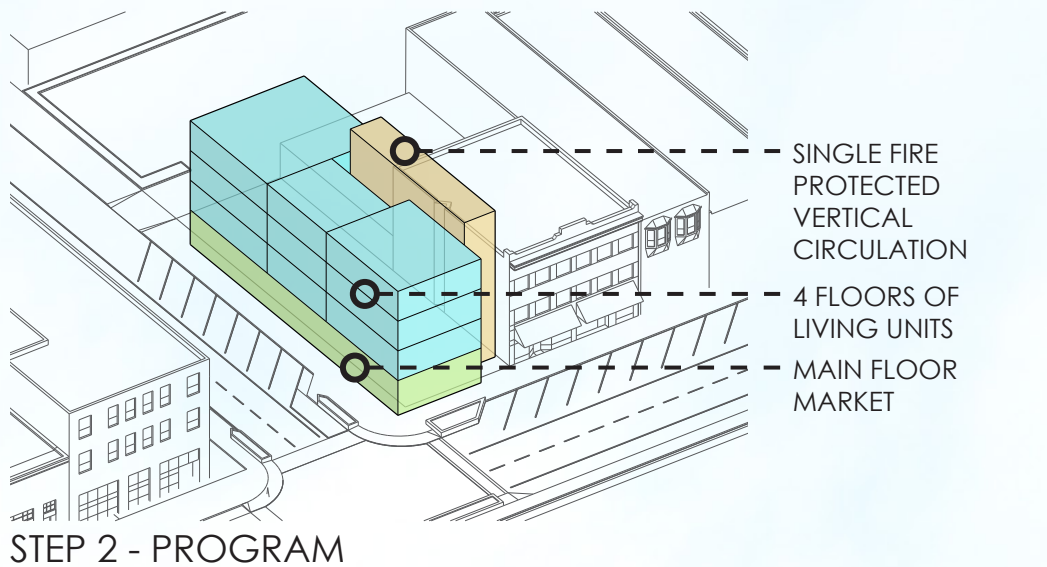
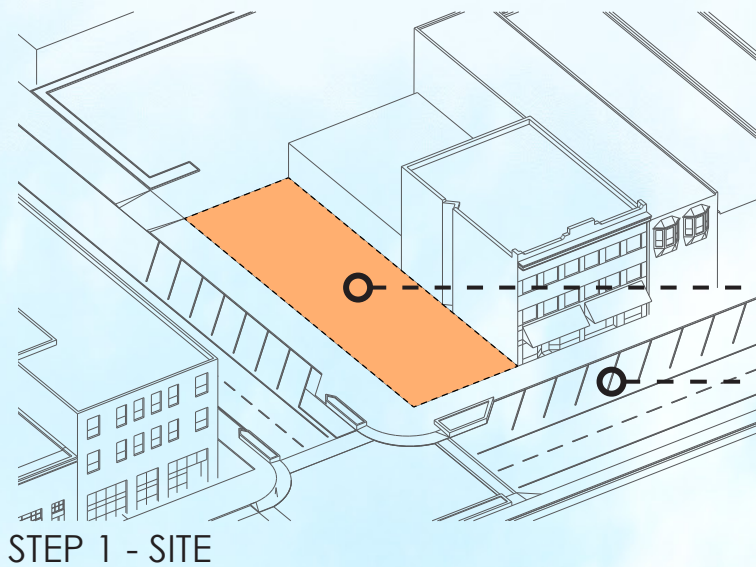
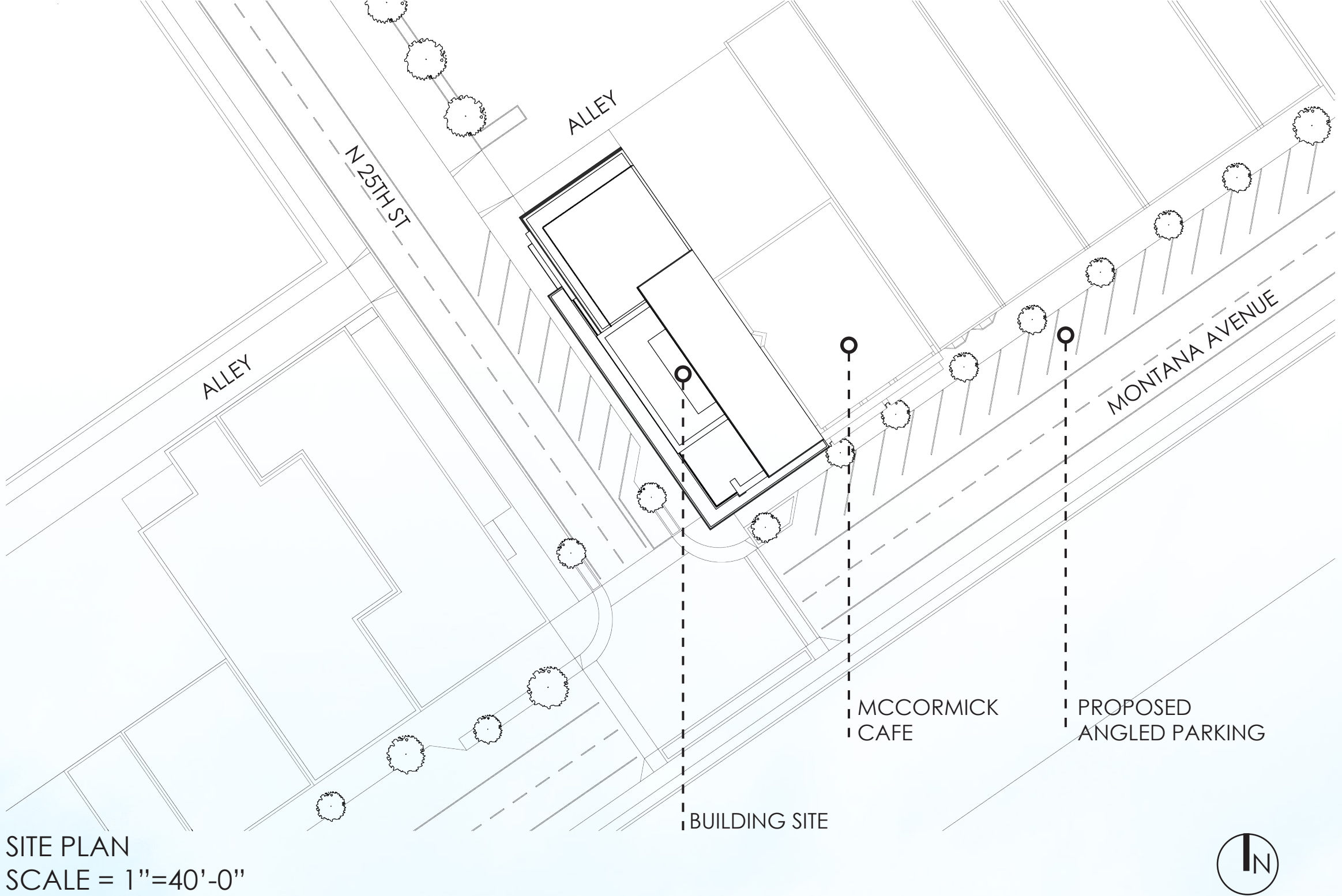
At street level, a small market activates the ground floor, fostering community interaction and contributing to the district's vibrancy. Above, four levels of residential living accommodate three thoughtfully designed condominiums per floor, blending privacy with urban connectivity. These residences integrate modern design with the warmth and texture of traditional materials, ensuring a timeless aesthetic that resonates with both past and present. By merging historic references with innovative design, this competition entry honors the architectural legacy of Montana Avenue while setting a precedent for thoughtful urban development. It is a testament to how new construction can respect and enhance a historic district, creating spaces that are both rooted in history and poised for the future.



FLOOR PLANS  
SCALE = 1"=30'-0"



BUILDING ELEVATIONS  
SCALE = 1"=30'-0"



BUILDING DIAGRAM

